

Write

Match each definition to its corresponding term.

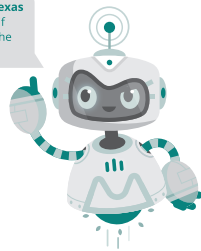
- | | |
|---|----------------------------------|
| 1. The amount of space occupied by an object | a. <i>polygon</i> |
| 2. A regular polyhedron whose six faces are congruent squares | b. <i>polyhedron</i> |
| 3. The total area of the two-dimensional surfaces that make up a three-dimensional object | c. <i>cube</i> |
| 4. The distance across a circle through its center | d. <i>unit cube</i> |
| 5. A geometric solid that is made up of polygons | e. <i>surface area</i> |
| 6. The intersection of two faces of a polyhedron | f. <i>volume</i> |
| 7. A closed figure formed by three or more line segments | g. <i>point</i> |
| 8. A two-dimensional representation of a three-dimensional geometric figure | h. <i>line segment</i> |
| 9. A cube that is one unit in length, one unit in width, and one unit in height | i. <i>geometric solid</i> |
| 10. A bounded three-dimensional geometric figure | j. <i>faces of a polyhedron</i> |
| 11. A portion of a line that includes two points and all the points in between those two points | k. <i>edge of a polyhedron</i> |
| 12. The polygons that make up a polyhedron | l. <i>vertex of a polyhedron</i> |
| 13. A location in space | m. <i>net</i> |
| 14. The point where the edges of a polyhedron meet | n. <i>diameter</i> |

Remember

The surface area of a polyhedron is the sum of all the areas of the faces of the polyhedron.

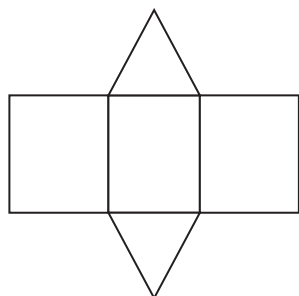
Practice

Visit livehint.com/texas
or use this QR code if
you need a hint on the
Practice questions.

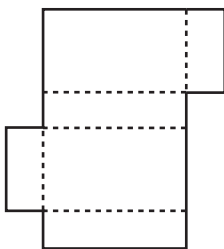


1. Name the solid figure formed by each net.

a.

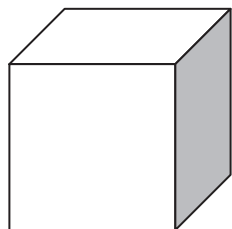


b.

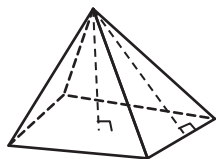


2. Draw a net that will form each solid figure.

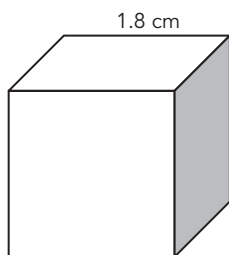
a.



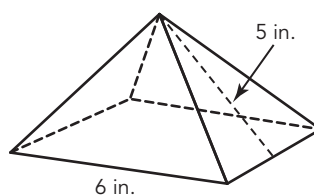
b.



3. Calculate the surface area of the cube.



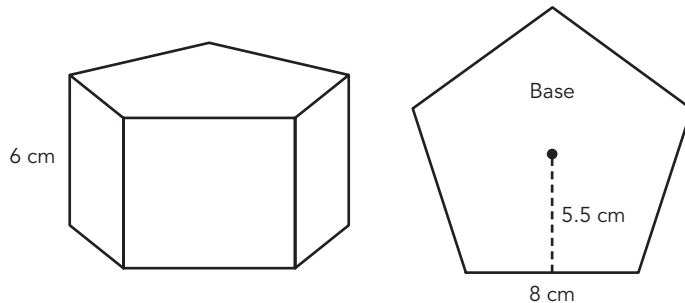
4. The pyramid shown has a square base and congruent triangular faces. Calculate the surface area of the pyramid.



5. Estimate and calculate the surface area of a rectangular prism with a length of 9.06 ft, a width of 4.11 ft, and a height of 6.2 ft.

Stretch

A pentagonal prism has pentagons as bases. Each base can be divided into five congruent triangles. Determine the surface area of this pentagonal prism.



Review

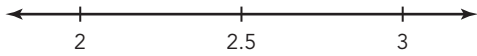
1. Kendra is a huge fan of Broadway musicals. She wants to record some of her favorite shows. The table shows the musicals she has chosen and how much space they each take up in megabytes.

Musical	Disc Space (megabytes)
<i>Annie</i>	109.785
<i>Beauty and the Beast</i>	131.642
<i>Into the Woods</i>	79.4
<i>Les Miserables</i>	192.27
<i>Shrek the Musical</i>	117.005

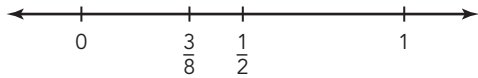
- Calculate the total amount of memory the musicals will take up. Show your work.
- How much out of 700 megabytes will Kendra have left after she records her musicals? First estimate, then calculate the answer. Show your work.

2. Determine a rational number between the rational numbers in each pair.

a. Adult male polar bears measure 2.5 to 3 meters tall.



b. The weights of newborn polar bear cubs range from $\frac{3}{8}$ to $\frac{1}{2}$ kilogram.



3. Determine each sum.

a. $1.009 + 6.965$

b. $3.25 + 0.003$