

Assignment

LESSON 2: Get in Line

Write

Explain why estimating the sum or difference of decimals before performing the actual calculation is helpful.

Remember

When you add or subtract decimals, it is important to align the digits on like place values.

Practice

1. Calculate each sum or difference.

a. $43.78 + 21.05 + 52.29$

b. $18.867 + 7.3 + 8.92$

c. $74.51 - 13.02$

d. $97.268 - 75.21$

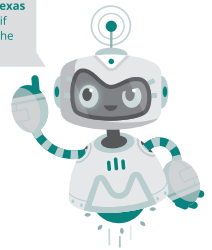
e. $15.79 + 4.54 - 2.006$

f. $86.25 - 19.807 + 2.057$

2. Ginger completed a race 6.8 seconds behind Will, who completed the race in 53.786 seconds. What was Ginger's time?

3. A newborn elephant at the zoo weighed 92.8 kilograms at birth. Its mother weighs 2024.25 kilograms. What is the difference in weight between the mother and baby elephant?

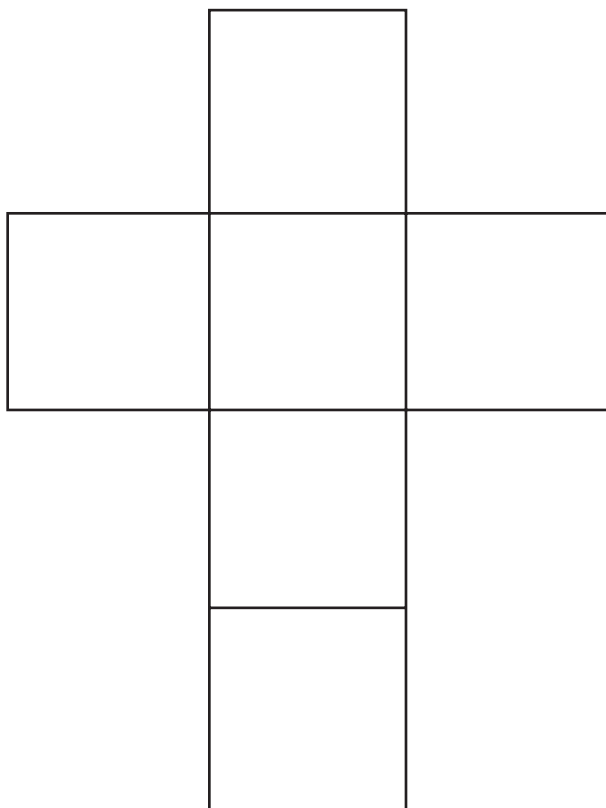
Visit livehint.com/texas
or use this QR code if
you need a hint on the
Practice questions.



4. Cristina wants to purchase four items at the sporting goods store. The items she wants to buy are soccer cleats for \$24.99, shin guards for \$12.99, soccer socks for \$4.49, and a soccer ball for \$19.95. If she pays for the items with a \$100 bill, how much change will she get?

Stretch

Write the numbers 0.3, 0.4, 0.5, 0.6, 0.7, and 0.8 in the squares so that all the numbers in the column and all the numbers in the row have a sum of 2.



Review

Calculate the area of each given figure.

