

### Write

Describe a way to use estimation to help place the decimal point correctly in the product of two decimals.

### Remember

When multiplying decimals, the number of decimal places in the product is equal to the sum of the decimal places in the factors.

### Practice

1. Insert decimal points into each multiplication equation to make the equation true.

a.  $25.7 \times 3.4 = 8738$

b.  $4157 \times 321 = 13.34397$

c.  $135.4 \times 15.04 = 2036416$

d.  $256 \times 1111 = 284.416$

2. Estimate each product to the nearest whole number. Then, calculate each product.

a.  $3.9 \times 1.4$

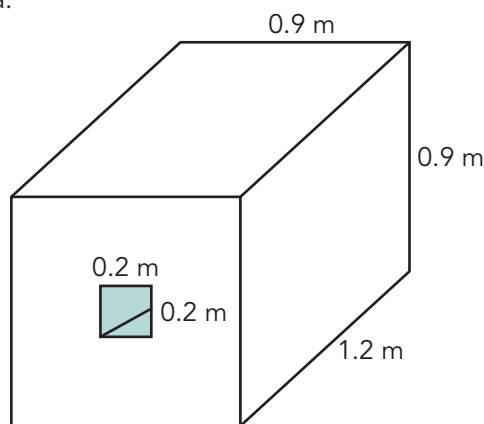
b.  $6.18 \times 9.4$

c.  $4.07 \times 7.25$

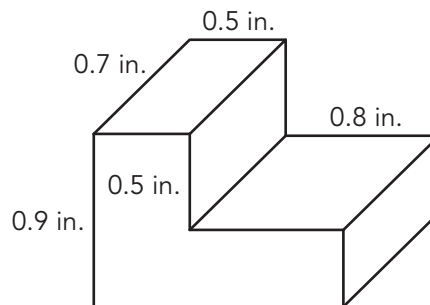
d.  $5.216 \times 2.87$

3. Determine the volume of each figure.

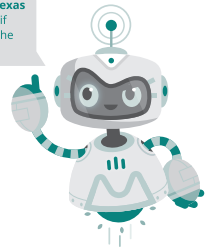
a.



b.

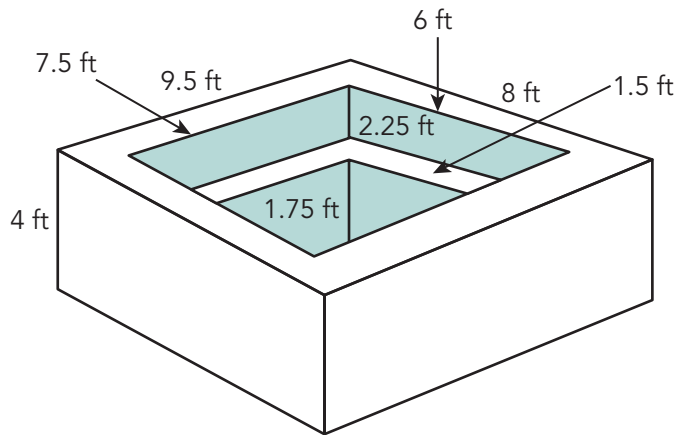


Visit [livehint.com/texas](https://livehint.com/texas)  
or use this QR code if  
you need a hint on the  
Practice questions.



## Stretch

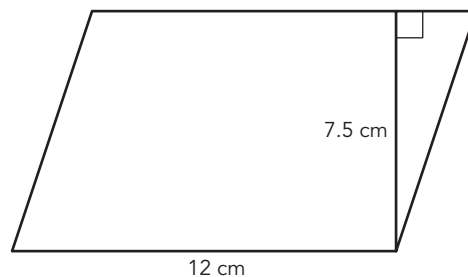
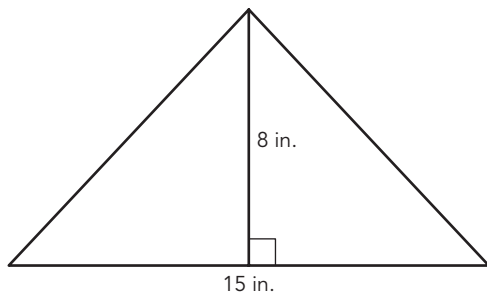
Regina is building a hot tub next to her swimming pool. The interior dimensions are 6 feet by 7.5 feet. It includes solid bench seating on all four sides. The bench has a width of 1.5 feet. The bench is positioned 1.75 feet from the ground and 2.25 feet from the top, as shown.



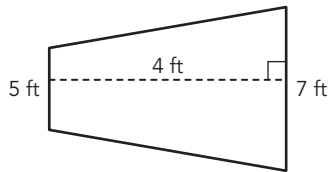
1. When the hot tub is filled, the water level will be 0.25 feet from the top. How much water will it take to fill the hot tub?
2. How many cubic feet of concrete are needed to build the hot tub?

## Review

1. A flag is folded into a triangle to be displayed in a triangular display with the dimensions shown in the diagram. How many square inches of glass are needed to cover the display?
2. Yvonne cut a picture into the shape of a parallelogram to place into her scrapbook, shown below. What is the area of the picture?



3. The planning committee submitted a plan to the town architect to revitalize the town square. Their plan includes a new flagpole with a concrete base in the shape of a trapezoid. The base of the trapezoid and its dimensions are shown below. What is the area of the base proposed by the planning committee?



4. A pendant on a necklace is created from two congruent parallelograms that share a side. The pendant is shown below. Half of the pendant will be covered with gold leaf. How many square millimeters of gold leaf will be used?

