

Assignment

LESSON 4: Dividend in the House

Write

Describe what is meant by the operation of division using the terms *dividend*, *divisor*, and *quotient*.

Remember

In a division problem, if you multiply the dividend and the divisor by the same number, the quotient remains the same.

Practice

1. A local superstore had a surplus of 10,000 pencil packs and decided to donate them to area schools. If there are 27 schools and the store wants to donate the same number of packs to each school, how many pencil packs will each school receive?
2. Write a different division expression that has the same quotient as the division expression given.

a. $36.5 \div 0.005$

b. $63.196 \div 14.8$

c. $0.3 \div 9$

d. $440.618 \div 3.02$

e. $8 \div 0.75$

f. $51.38 \div 1.27$

3. Estimate each quotient. Then, calculate the quotient using long division. Round to the nearest hundredth, if necessary.

a. $51.68 \div 8$

b. $93.45 \div 6.23$

c. $29.988 \div 2.04$

d. $38 \div 7$

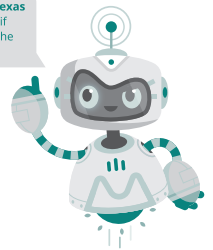
e. $49.7 \div 25.3$

f. $118 \div 26$

g. $24.4 \div 8.3$

h. $603 \div 98$

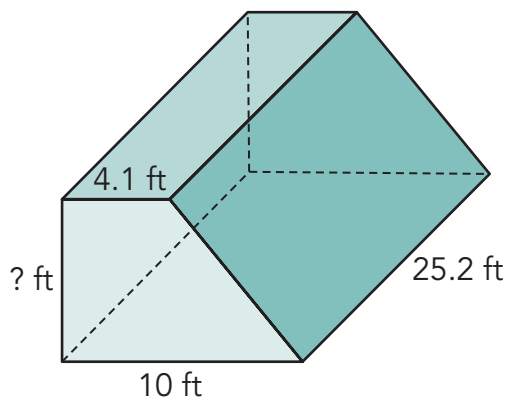
Visit livehint.com/texas
or use this QR code if
you need a hint on the
Practice questions.



Stretch

The volume of the trapezoidal prism is 1279.152 cubic feet.

Determine the height of the trapezoid base.



Review

1. Mary Alice has decided to give her best friend a candle for her birthday. To wrap the candle, she spends \$2.50 on a rectangular sheet of wrapping paper that is 24 inches by 19.5 inches. How many square inches are in one rectangular sheet of wrapping paper?
2. Determine the area of a triangle that has a height of 4 feet and a base of $6\frac{1}{2}$ feet.
3. Determine the quotient.
 $12\frac{3}{4} \div 1\frac{1}{5}$
4. Determine each product.
a. 3.01×5.8 b. 1.2×1.2