

# Assignment

## LESSON 1: Patty Paper, Patty Paper

### Write

Explain what a conjecture is and how it is used in math.

### Remember

If two figures are congruent, all corresponding sides and all corresponding angles have the same measure.

### Practice

1. Determine which figures are congruent to Figure A. Follow the steps given as you investigate each shape.

- Make a conjecture about which figures are congruent to Figure A.
- Use patty paper to investigate your conjecture.
- Justify your conjecture by stating how you can move from Figure A to each congruent figure by sliding, flipping, or spinning Figure A.

Visit [livehint.com/texas](https://livehint.com/texas) or use this QR code if you need a hint on the Practice questions.

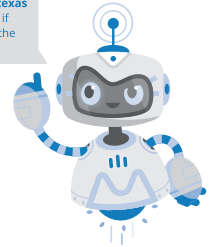


Figure A

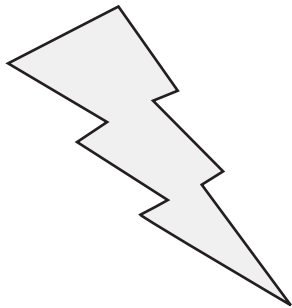


Figure B

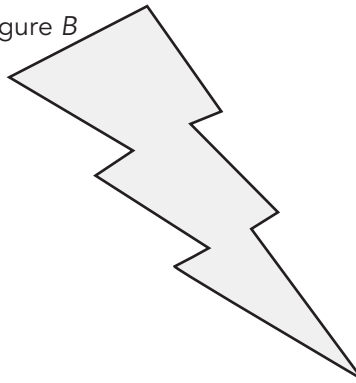


Figure C

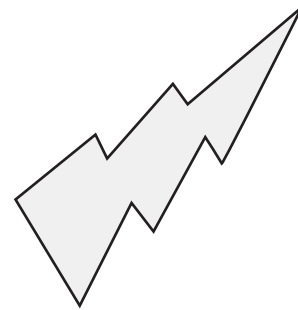


Figure D

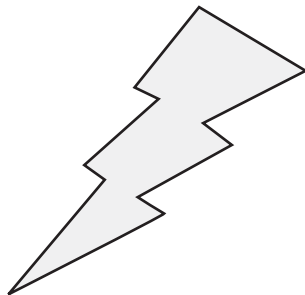


Figure E

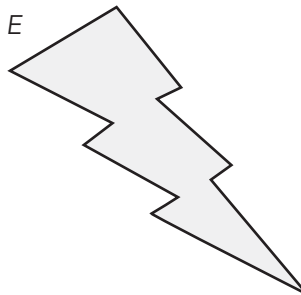
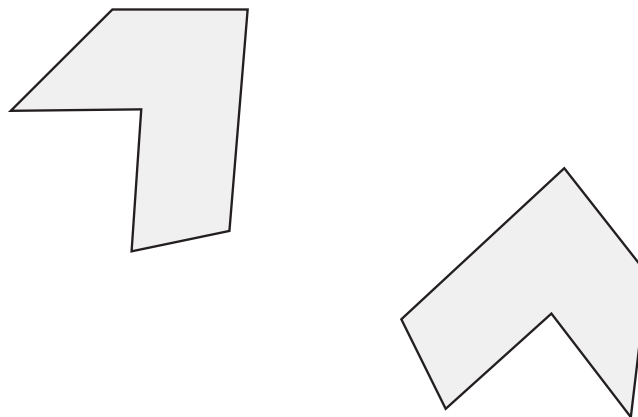


Figure F



## Stretch

The figure on the left was reflected, or flipped, over a *line of reflection* to create the figure on the right. Determine the location of the line of reflection.



## Review

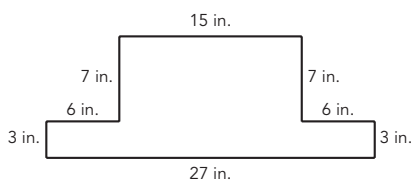
1. Determine each sum or difference.

a.  $-14 + 25$

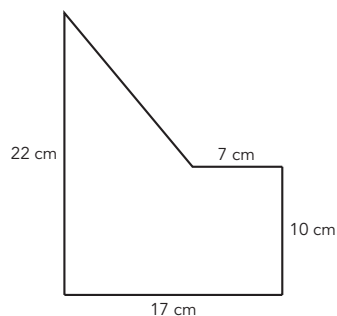
b.  $-14 - 25$

2. Calculate the area of each figure.

a.



b.



3. Write the ordered pair for each point plotted on the coordinate plane.

