

Assignment

LESSON 1: Patty Paper, Patty Paper

Write

Explain what a conjecture is and how it is used in math.

Remember

If two figures are congruent, all corresponding sides and all corresponding angles have the same measure.

Practice

1. Determine which figures are congruent to Figure A. Follow the steps given as you investigate each shape.

- Make a conjecture about which figures are congruent to Figure A.
- Use patty paper to investigate your conjecture.
- Justify your conjecture by stating how you can move from Figure A to each congruent figure by sliding, flipping, or spinning Figure A.

Visit livehint.com/texas or use this QR code if you need a hint on the Practice questions.

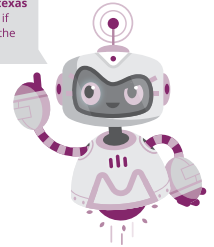


Figure A

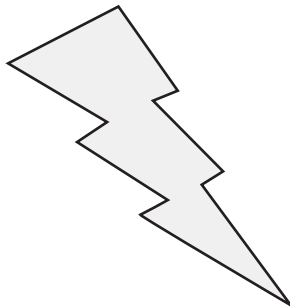


Figure B

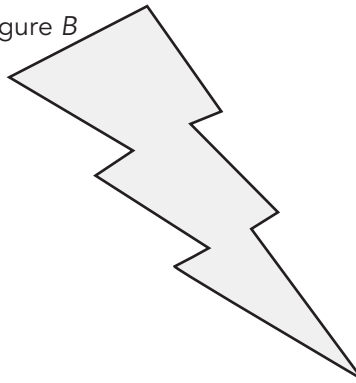


Figure C

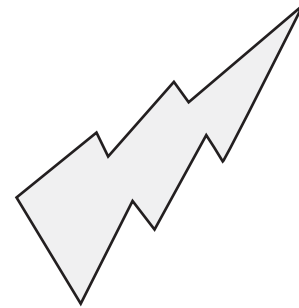


Figure D

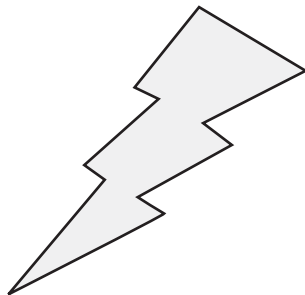


Figure E

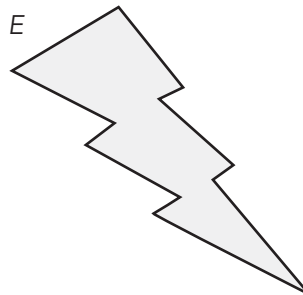
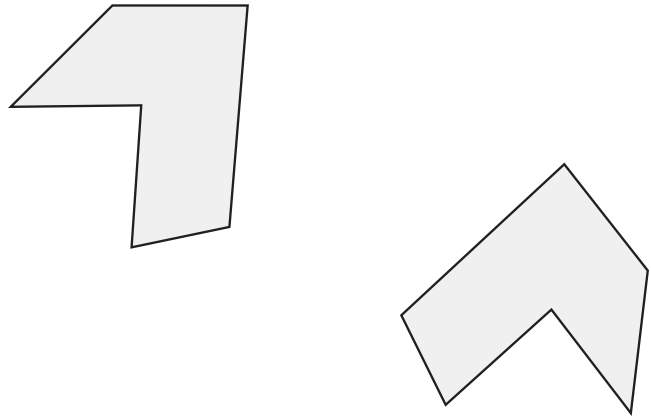


Figure F



Stretch

The figure on the left was reflected, or flipped, over a *line of reflection* to create the figure on the right. Determine the location of the line of reflection.



Review

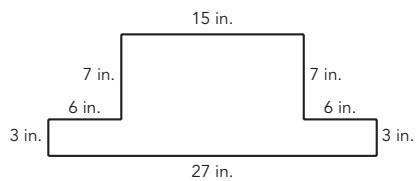
1. Determine each sum or difference.

a. $-14 + 25$

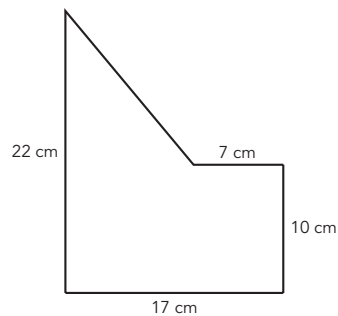
b. $-14 - 25$

2. Calculate the area of each figure.

a.



b.



3. Write the ordered pair for each point plotted on the coordinate plane.

